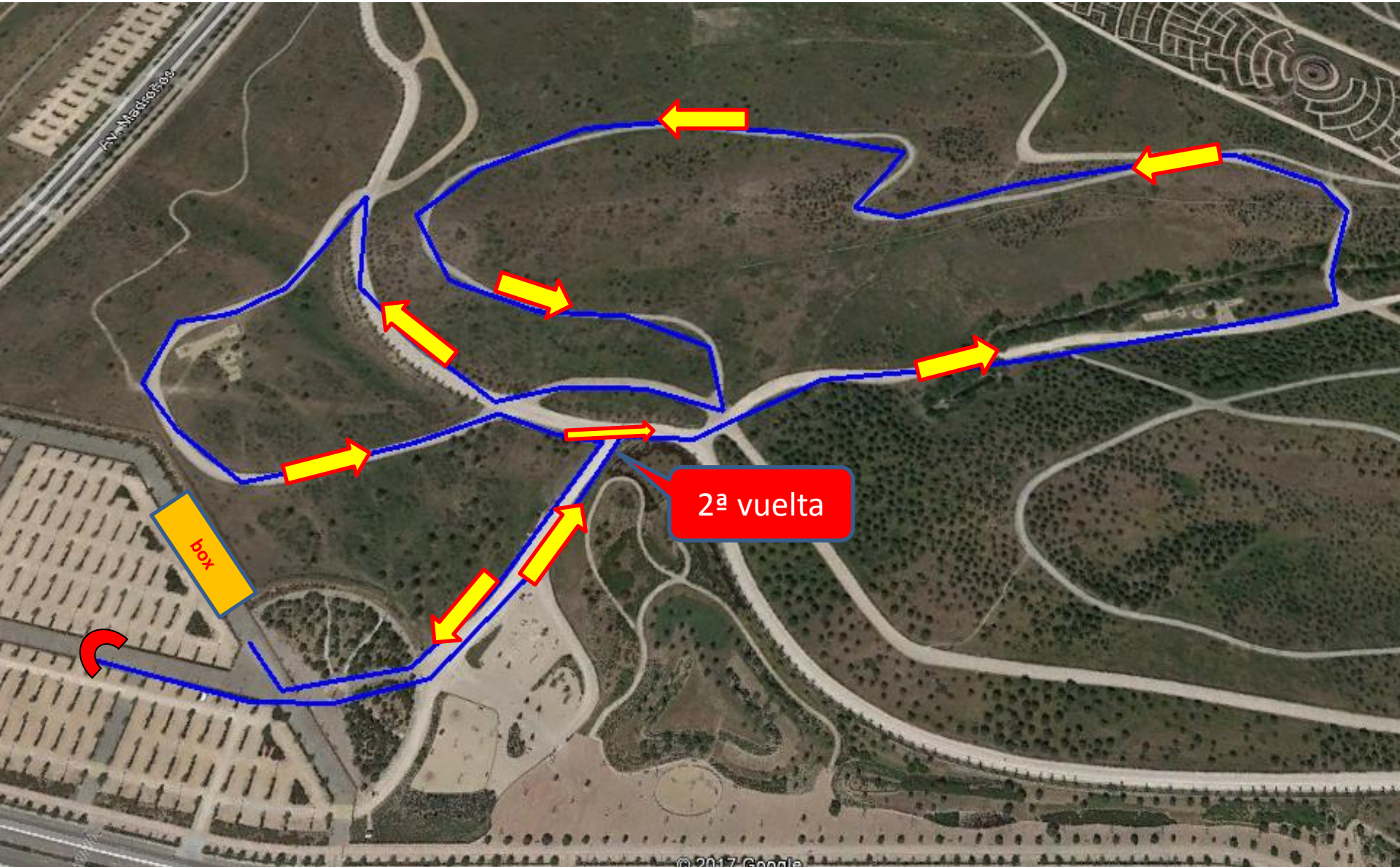


MADRID

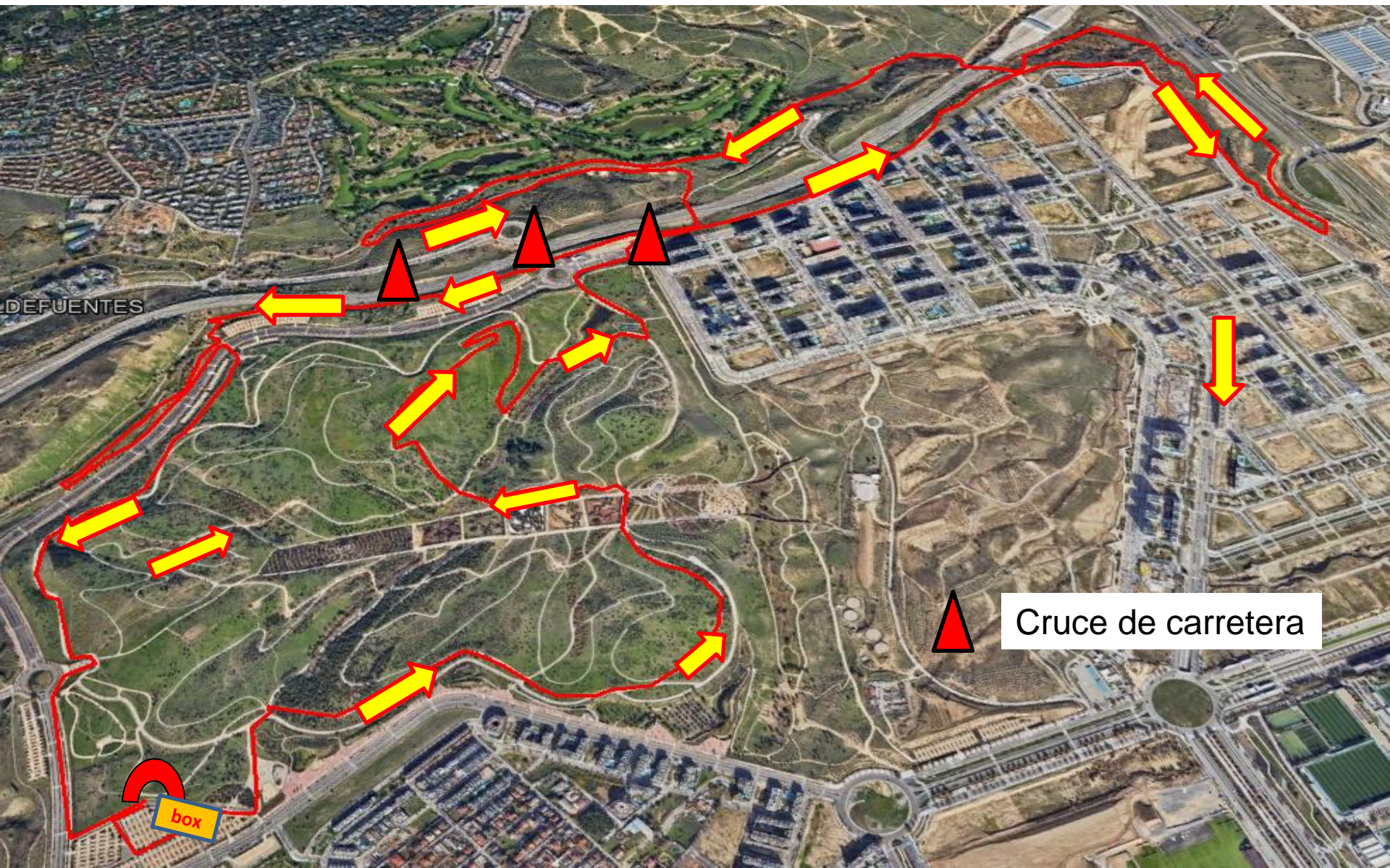
Recorrido RUN1: 5 km (2 vueltas)





MADRID

Recorrido MTB : 16,8 km



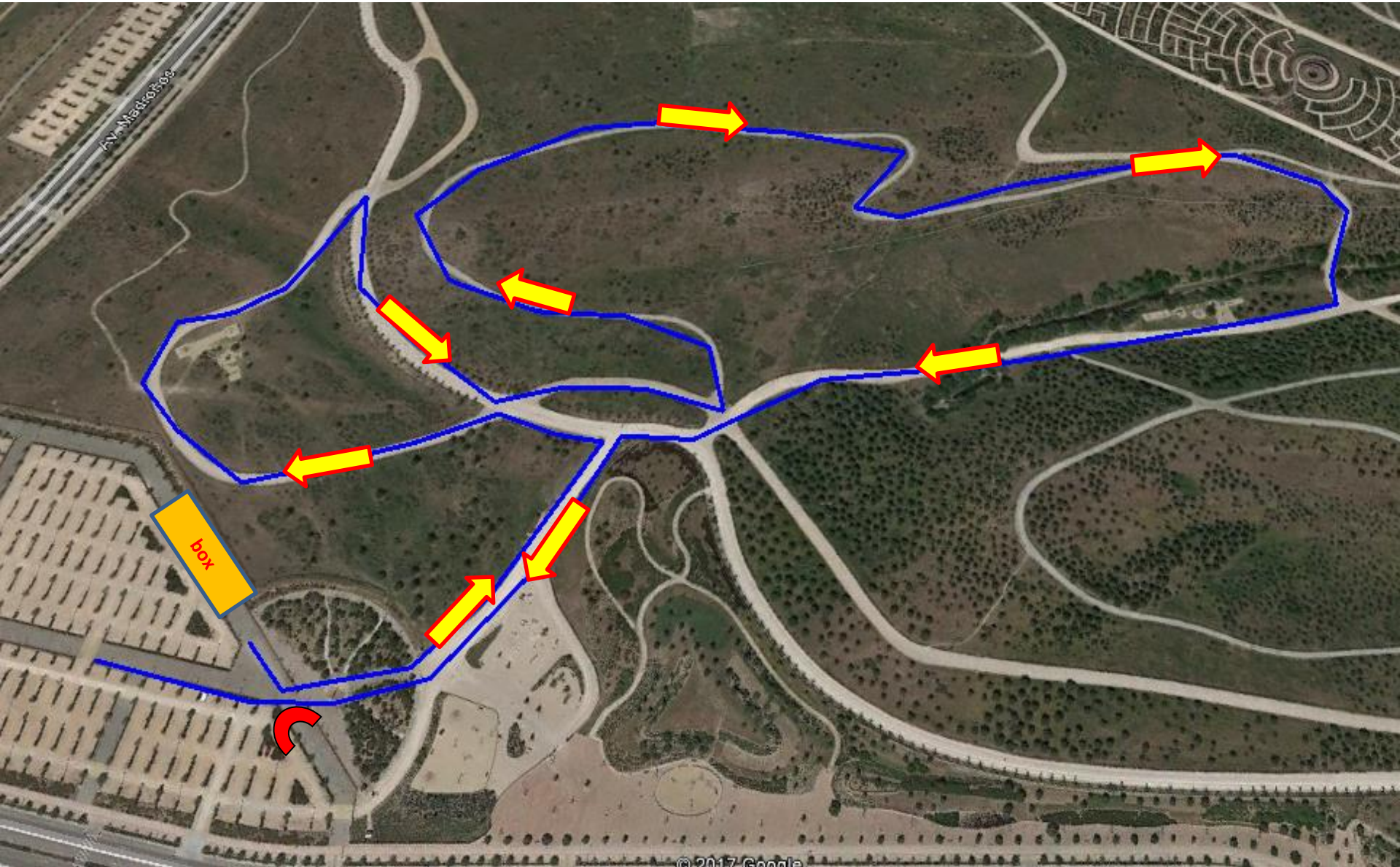
DEFUENTES

▲ Cruce de carretera

box

MADRID

Recorrido RUN2: 2,5 km

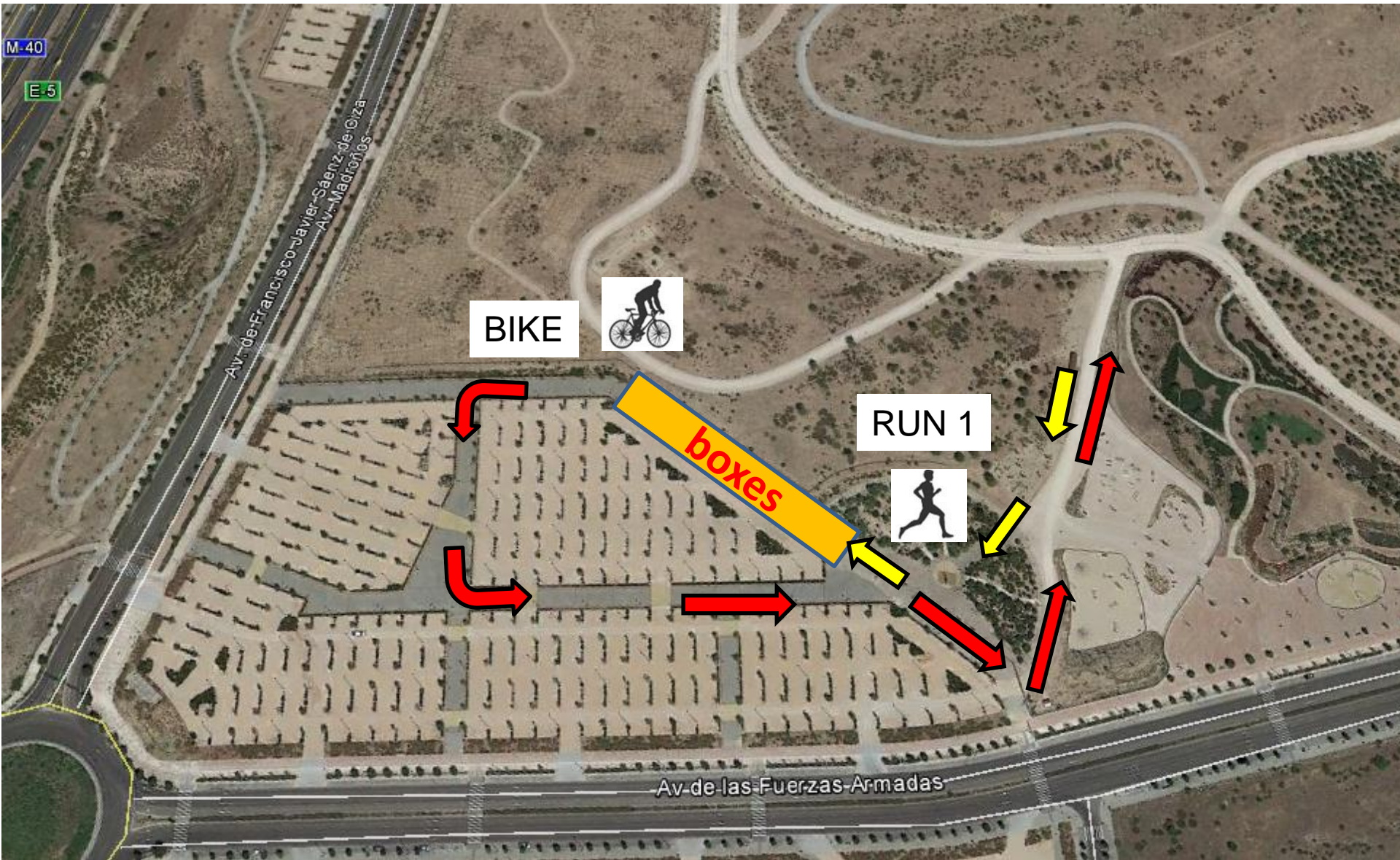






MADRID

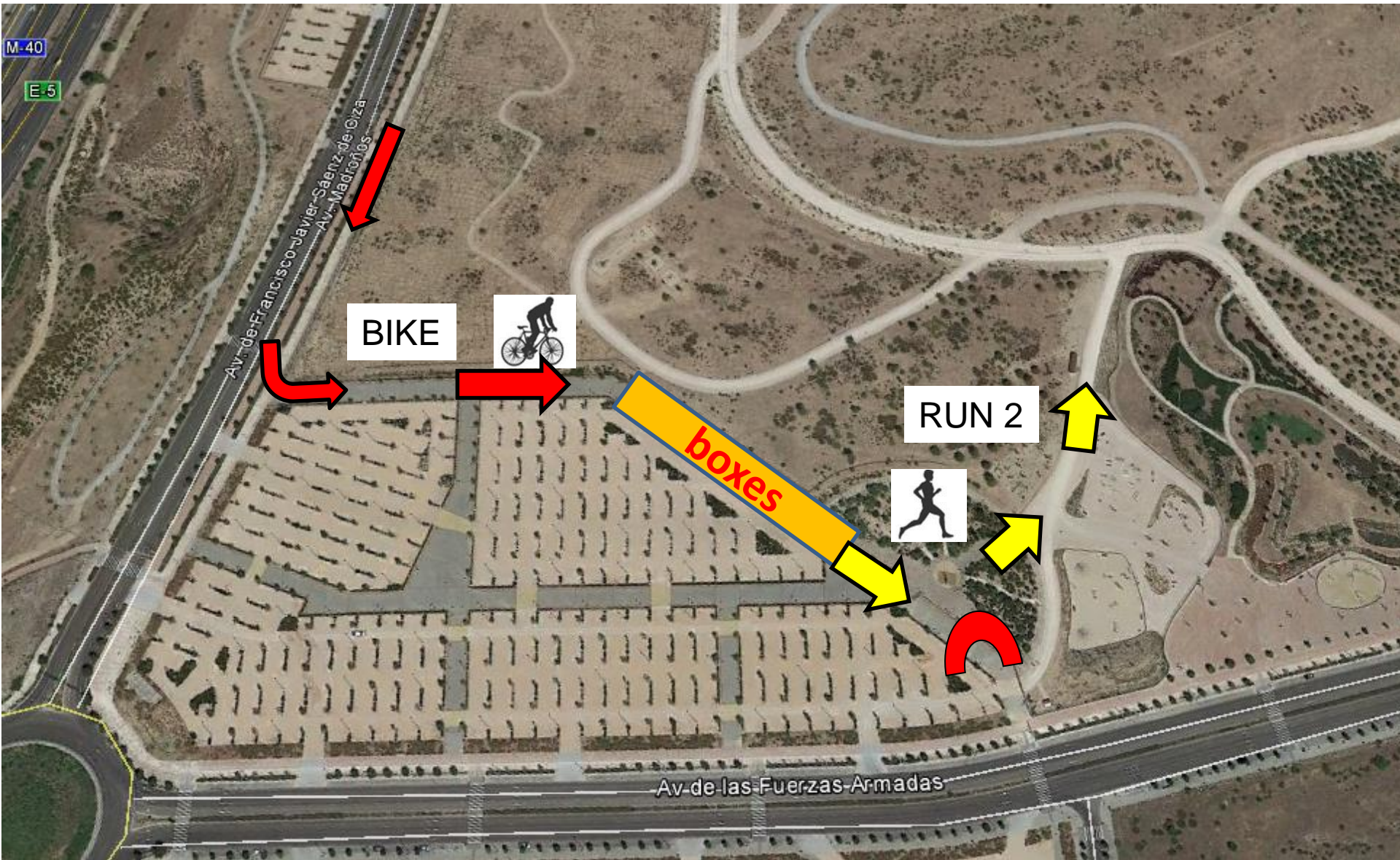
TRANSICIÓN 1 : RUN 1 - BIKE





MADRID

TRANSICIÓN 2 : BIKE – RUN2





MADRID

CRUCES DE CARRETERA

